

Why have a mammogram?

A mammogram is used to obtain information about a variety of breast conditions and especially to diagnose breast cancer where early detection is known to greatly improve survival.

X-Ray · Ultrasound · MRI · Biopsy · Angiography · CT
Mammography · Bone Mineral Densitometry · Dental X-Rays
Consultations · Interventional Radiology · Nuclear Medicine

Belconnen Lakeview Square

Bruce Calvary Clinic

Deakin Calvary John James Hospital

Erindale Valley Diagnostic Centre

Garran Brindabella Specialist Centre

Goulburn X-Ray Bourke Street

Queanbeyan Morisset House

Turner Construction House

Patient Booking Service 1300 788 508

Administration Enquiries 6203 2222

Canberra Imaging Group

Executive Office

77 Denison Street, Deakin ACT 2600

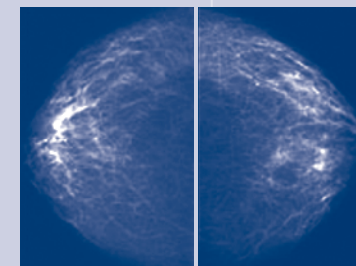
PO Box 55 Deakin West, ACT 2600

Email info@cig.com.au

Web www.canberraimaging.com.au

Mammogram

Mammogram



Preparation

Certain substances can produce unwanted effects on the films and you will be asked not to use talcum powder on the breasts on the day of your examination.

Please bring any relevant films and your referral to your appointment.

Attendance

Although each image takes only a moment, the whole procedure can take 15 to 20 minutes to complete. The radiologist will look at the images to see if further views or an ultrasound might be needed. This will take an extra 30 minutes. Your films will be examined by two radiologists and will be available the following day for collection.

The Procedure

Mammography uses X-Rays to record images of the breasts on film. The images are taken on an X-Ray machine by a trained mammographer.

Views are taken from several angles to ensure complete coverage of both breasts and it is possible your test may be supplemented by an ultrasound examination. This will be used to obtain more information and prevent a delay in diagnosis.

The technique uses compression of the breast tissue to obtain clear images. This is essential to see the fine internal detail but it does produce some discomfort. This is a momentary sensation and is generally well tolerated. If your breasts are very tender on the day it might be wise to delay the test until your symptoms settle.

Medicare Rebate

To receive a medicare rebate for a mammogram performed by the Canberra Imaging Group the patient history must mention one of the following clinical indication: family history of breast cancer; follow-up of previous breast malignancy; mass; breast lump; localised pain/tenderness or nipple discharge.

Please Ask

We know that most patients are anxious about having tests performed. If you do have any questions or concerns, please ask our staff.

Canberra Imaging Group strongly advises that you return to your referring doctor in order for your doctor to discuss your radiology report with you.