

A kidney (renal) nuclear medicine scan is used to diagnose certain kidney diseases. It is an excellent diagnostic tool because it shows not only the anatomy of the kidneys, but the function of them as well. This additional “functional information” allows radionuclide imaging to diagnose certain diseases and various medical conditions much sooner than other imaging examinations.

X-Ray · Ultrasound · MRI · Biopsy · Angiography · CT
Mammography · Bone Mineral Densitometry · Dental X-Rays
Consultations · Interventional Radiology · Nuclear Medicine

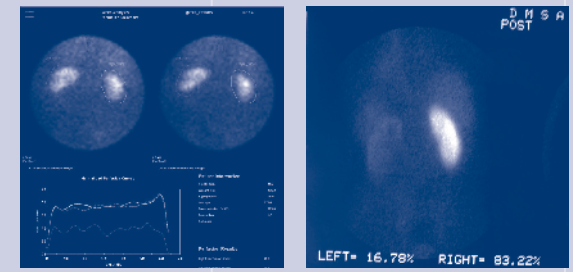
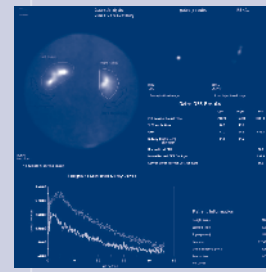
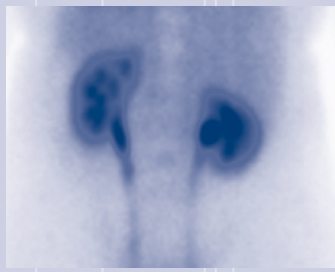
Belconnen Lakeview Square
Bruce Calvary Clinic
Deakin Calvary John James Hospital
Erindale Valley Diagnostic Centre
Garran Brindabella Specialist Centre
Goulburn X-Ray Bourke Street
Queanbeyan Morisset House
Turner Construction House

Patient Booking Service 1300 788 508
Administration Enquiries 6203 2222

Canberra Imaging Group
Executive Office
77 Denison Street, Deakin ACT 2600
PO Box 55 Deakin West, ACT 2600
Email info@cig.com.au
Web www.canberraimaging.com.au

Renal Scan

Renal Scan



It is safe?

Like all other Nuclear Medicine procedures, the amount of radiation used is extremely small, making this test very safe. In fact the amount of radiation from most Nuclear Medicine procedures is comparable to an x-ray.

Before the test

Please advise staff when booking if you are pregnant or breast feeding. Be sure to bring the doctor's written request for your test. Prior to your appointment, you may continue your normal activities and diet but it is extremely important that you are well hydrated, so you need to drink at least 2-3 cups of water, while emptying your bladder as often as you like.

Please bring any relevant films and your referral to your appointment.

During the test

When you arrive in the Nuclear Medicine Department, you will be asked questions about your medical history. You will be requested to empty your bladder, then you will be positioned on a scanning table, and given an injection (into the vein) of a radioactive tracer. Images will be taken straight after for approximately 30 minutes where you will need to lie very still. The imaging staff may then ask you to empty your bladder one more time before taking further images. Once the required images are done, the test is complete.

After the test

You may resume your normal activities and diet after the test. The radioactive tracer you were given is not harmful and it quickly disappears out of your body over the next couple of days through urine and the natural process of radioactivity decay.

The test results

This is reported by a specialist and may take a further 45-60 minutes so you may prefer to return later for your results.

This report should then be taken to your own doctor.

Minor following variations exist with regard to the above protocol, depending on your clinical condition:

DMSA Study – looking for renal scarring. Following the usual Renal scan procedure above, you will be asked to return 3-4 hours post injection for more images.

Captopril Study – for high blood pressure patients. Prior to the test you will be asked to cease some medications that might interfere with the test. Upon arrival to the Nuclear Medicine Department you will be given a blood pressure pill. After waiting one hour the renal scan will be performed.

Canberra Imaging Group strongly advise that you return to your referring doctor in order for your doctor to discuss your radiology report with you.