

A thyroid scan shows the size and shape of your thyroid using a radioactive tracer. It also looks at the overall function of the thyroid.

X-Ray · Ultrasound · MRI · Biopsy · Angiography · CT
Mammography · Bone Mineral Densitometry · Dental X-Rays
Consultations · Interventional Radiology · Nuclear Medicine

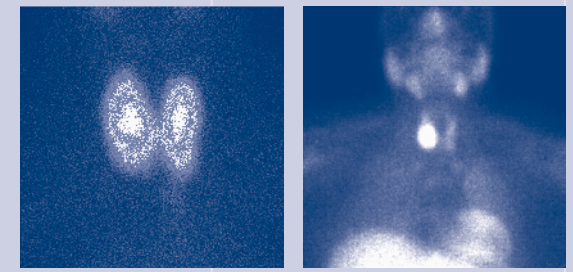
Belconnen Lakeview Square
Bruce Calvary Clinic
Deakin Calvary John James Hospital
Erindale Valley Diagnostic Centre
Garran Brindabella Specialist Centre
Goulburn X-Ray Bourke Street
Queanbeyan Morisset House
Turner Construction House

Patient Booking Service 1300 788 508
Administration Enquiries 6203 2222

Canberra Imaging Group
Executive Office
77 Denison Street, Deakin ACT 2600
PO Box 55 Deakin West, ACT 2600
Email info@cig.com.au
Web www.canberraimaging.com.au

Thyroid Scan

Thyroid Scan



It is safe?

Like all other Nuclear Medicine procedures, the amount of radiation used is extremely small, making this test very safe. In fact the amount of radiation from most Nuclear Medicine procedures is comparable to an x-ray.

Preparation

There is no preparation for this test. Please let us know if you have diabetes, glaucoma, heart disease or any other serious illness.

Please advise staff if you are or could be pregnant or breast feeding. Please bring a list of all medications and supplements you take.

Please bring any relevant films and your referral to your appointment.

To ensure that we are providing you with the best service, at any stage of the examination if you have any questions or concerns, please ask our staff.

We also welcome any feedback.

When you come for the test

When you arrive in the Nuclear Medicine Department you will be asked about your medical history and medications. You will then be given an injection of a radioactive tracer by a qualified Nuclear Medicine technologist, there are no side effects from the injection. You will have to wait 10-20 minutes after the injection and then you will be asked to lie down on the scanning bed and images of your thyroid will be taken.

A specialist will review your pictures. In some cases extra images will be taken to obtain more detailed information. Once the required images are done the test is complete.

You may resume your normal activities, diet and medications after the test. The radioactive tracer you were given is not harmful and it quickly disappears out of your body over the next couple of days through urine and the natural process of radioactivity decay.

The examination usually takes about 45 minutes. After the procedure the films will be developed and then reported by a specialist. This may take a further 45 to 60 minutes so you may prefer to return later for your results. The report and films should then be taken to your own doctor.

Canberra Imaging Group strongly advise that you return to your referring doctor in order for your doctor to discuss your radiology report with you.